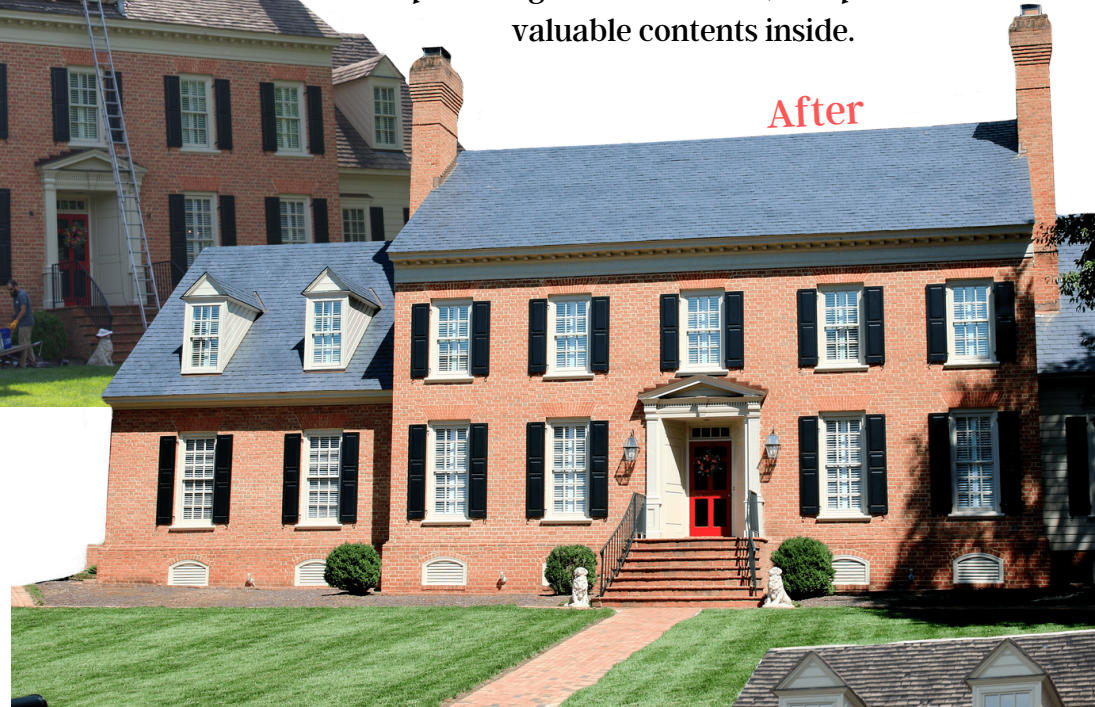


Concrete Tile replaced with Natural Slate



Before

Every roof will eventually require a replacement. Some roofs may fail earlier than others, and attention should be paid to understanding the replacement materials. A roof is the work horse of a structure, it protects from the heat of the sun, the pounding of rain and hail, and protects the valuable contents inside.



After

In this case study the Hendricks tile, a concrete tile reinforced with steel, was at the end of its life. The homeowner wanted a hard roof that could offer protection, beauty, and durability. A slate specialist was contracted to install the 16 x Random x 1/4-3/8" unfading black Spanish slate. As the color of the roof changed from a brown taupe to a rich blue black, and the whole house was given new life. The weight of the slate was similar to that of the tile, so structural enforcement was not necessary. This house will now be protected for the next 100 plus years. The roof isn't only a protector but also a 1/3 of the visual interest of a structure. Slate adds visual natural interest with a uniformity in color yet the natural unmistakable surface texture of a natural stone. We build our homes with elements of beauty, longevity, and integrity, let's make sure that we install our roofs with these attributes as well.

Before

After

